

WESCO®

ANIXTER



Indoor & Outdoor **Lighting Capabilities**

WESCO and Anixter's Lighting Team can answer any questions you may have regarding your indoor and outdoor lighting projects. Our lighting experts are equipped with the knowledge and experience to address even the most complex applications. With an unbiased approach, they will help you make a fair comparison of different products and technologies.

Our consultative approach to lighting and control solutions brings together best-in-class products and services from leading lighting manufacturers.

- Walkways
- Indoor Facility Lighting
- Roadways, Freeways

- Bridges / Tunnels
- Airfields
- Bike Paths

- Parking Lots / Garages
- Corporate Complexes
- Venues

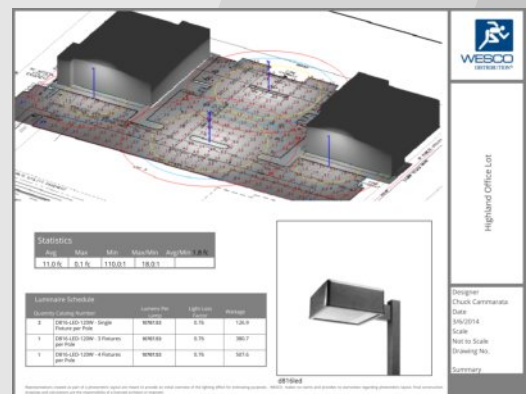
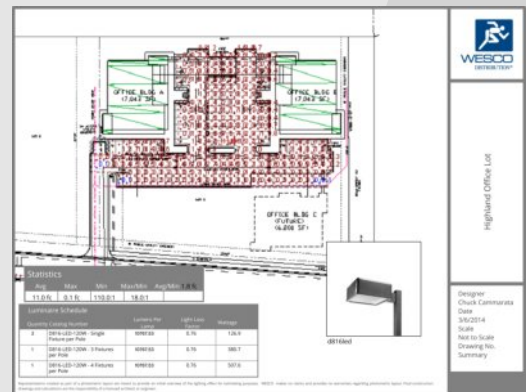
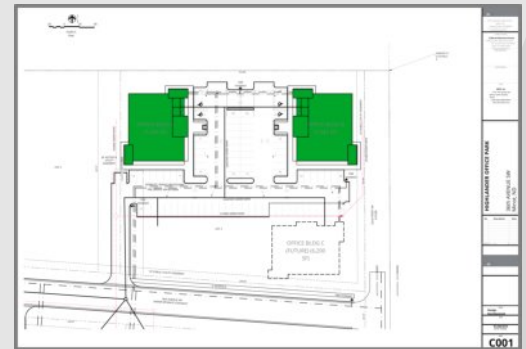
Photometric Layout and Design Capabilities

Our lighting certified design team can create a photometric layout from your site drawing and CAD file, to design the most appropriate lighting for your application. We help our customers make informed decisions by producing point-by-point, and color rendering layouts.

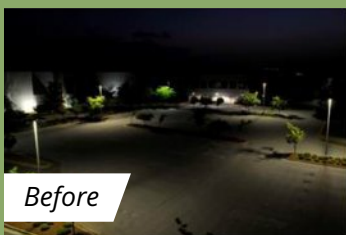
Services and Capabilities

- Identify rebates, tax incentives and financial options
- Create photometric calculations from your site plan
- Meet IES and AASHTO recommended practices
- Meet local codes, ordinances, and Dark Skies initiatives
- Reduce light trespass and glare while improving uniformity
- Consultative approach to product specification and comparisons
- Technical and troubleshooting support
- Project and inventory management
- WESCO | Anixter recycling program

From your site drawing (top) to a variety of photometric layouts (middle and bottom)



Our design team can help you save energy, lower maintenance costs and improve light quality.



WESCO | Anixter can help you analyze the financial impact of your lighting upgrades.

Our comprehensive payback analysis helps you weigh the costs vs. benefits of a project, focusing on energy reduction, reduced maintenance and available utility incentives.



Lighting Control Options



Fixture-Based Controls

Gain energy savings and fixture life with photocell, motion detection and programmable drivers.



Circuit-Based Controls

Control and metering cabinets for street lights, athletic fields/courts, parking lots, landscaping, indoor facilities, corporate settings and more.



Wireless Diagnostic & Control Systems

Two-way communications and control options for a variety of lighting applications.

Future-Proof Your LED Fixtures

Not sure what wireless or other advanced controls you may explore later? The ANSI 136.41 standard for dimming control receptacles allows for implementing an advanced control system in the future, while still being compatible with a standard twist lock photo control. Ask your WESCO | Anixter rep for more info.

Where Solar Makes Sense

Solar-powered lighting provides an effective solution for a wide range of facility challenges:

- Sustainability, CO₂-reduction or LEED goals
- Aging underground infrastructure
- Paved areas in need of lighting
- Challenges and costs of trenching

Integrated Communications and Surveillance Systems

Indoor and outdoor lighting solutions with built-in surveillance, communication, and audio functionality deliver a visible message to potential thieves that security is being addressed.

- Lighting controls and audio functionality are triggered by environmental analytics
- Wireless and dimmable lighting control maximizes energy savings and reduces operating costs



Outdoor Lighting Systems

Outdoor lighting systems may include fixtures, lamps, controls, and Poles/Arms/Brackets. As lighting systems evolve, the future of your outdoor lighting may include architectural luminaire styles, digital wireless solutions, Wi-Fi capabilities and a variety of communication and security features.



Lamps



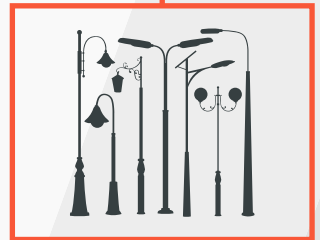
Lighting Fixtures



Controls



Poles, Arms, Brackets, and Bases



WESCO®

ANIXTER

225 W. Station Square Drive, Suite 700
Pittsburgh, PA 15219
412-454-2200 www.wesco.com

WESCO International, Inc. (NYSE: WCC), a publicly traded FORTUNE 500® company headquartered in Pittsburgh, Pennsylvania, is a leading provider of business-to-business distribution, logistics services and supply chain solutions. Pro forma 2019 annual sales were over \$17 billion, including Anixter International which it acquired in June 2020. WESCO offers a best-in-class product and services portfolio of Electrical and Electronic Solutions, Communications and Security Solutions, and Utility and Broadband Solutions. The company employs over 18,000 people, maintains relationships with over 30,000 suppliers, and serves more than 150,000 customers worldwide. With nearly 1.5 million products, end-to-end supply chain services, and leading digital capabilities, WESCO provides innovative solutions to meet current customer needs across commercial and industrial businesses, contractors, government agencies, institutions, telecommunications providers, and utilities. WESCO operates nearly 800 branch and warehouse locations in over 50 countries, providing a local presence for customers and a global network to serve multi-location businesses and multi-national corporations.