

Rubber Goods Testing & Exchange Program



Managed safety services for dielectric rubber gloves, sleeves, blankets, line hose, hoods, and boots performed in accordance with ASTM / OSHA standards, with additional accreditation by NAIL for PET.



Longstanding History of Quality

- **Safety is Our #1 Concern:** Hi-Line performs tests in accordance with ASTM / OSHA standards with additional accreditation by NAIL for PET.
- **Climate-Controlled Dielectric Lab Testing Facilities** providing the optimum testing and storage environment for rubber inventory.
- **Quick Turnaround Time and Expedited Options Available** to meet rush and emergency needs.
- **Variety of Testing and Inventory Options:** Hi-Line is uniquely capable of providing custom exchange or inventory programs to significantly reduce turnaround time.
- **Multiple Test Lab Locations:** Gilberts, IL and Webster, MA
- **Extensive Knowledge:** Hi-Line tests over 200,000 rubber products each year.
- **ASTM Committee Member:** Active participant on ASTM Committee F18, Electrical Protective Equipment for Workers.
- **Detailed Reporting Process:** Printed reports accompany every order and digital records are kept on file.
- **Communication** takes place throughout the testing process to help reduce high failure rates and elevated replacement costs.
- **Education:** Ask about safety presentations provided by one of our experienced personnel.

Are Your Rubber Goods in Compliance?

Regular inspection and testing intervals are designed to keep users safe. Rubber can become compromised through regular use, age, exposure to sharp objects, dirt, oils, petroleum-based products, environmental fluctuations, and improper storage. For these reasons, regular visual and electrical inspections are mandated by ASTM and OSHA.

Best Practices for Testing Rubber Insulating Products						
	Before First Use	30-60 Days	90 Days	6 Months	1 Year	Damage Suspected
Gloves	Required	Optional	Recommended	Required	Required	Required
Sleeves and Blankets	Required	Optional	Recommended	Recommended	Required	Required
Line Hose, Hoods, & Boots	Recommended	Optional	Optional	Optional	Recommended	Required

*OSHA regulations require electrical testing of rubber insulating equipment prior to the first use and periodically thereafter. Initial tests are referred to as a proof-test or acceptance test. These testing standards reference federal OSHA regulations and ASTM standards. Please note: State OSHA regulations and/or company regulations may have even more stringent testing intervals.

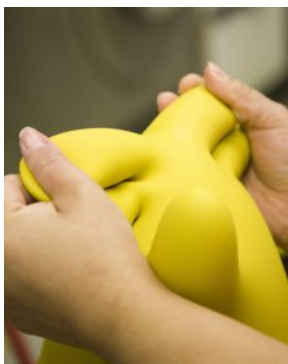
Rubber Goods Testing

Best Clean You've Ever Seen

Retesting starts with Hi-Line's detailed wash process, the best in the industry, and it's not just a cosmetic benefit. A detailed clean allows for better accuracy during visual inspections (both during testing and in the field), while reducing cross-contamination of products and removing harsh dirt, oils, and contaminants to prolong the life of the goods.



BEFORE / AFTER
Hi-Line's hand-washing

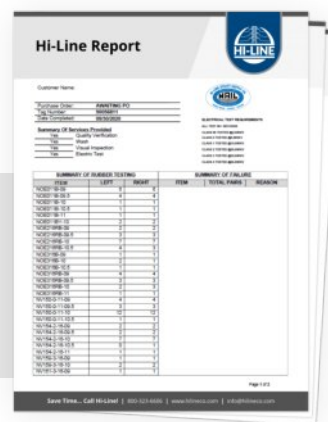


Testing to ASTM Standards

Detailed visual inspection and electrical tests are performed in our on-site testing facilities.

Detailed Reporting Process

Printed test reports accompany every order and digital records are kept on file.



Customized Solutions to Meet Vastly Varying Needs

Hi-Line offers multiple solutions for maintaining compliance on rubber insulating goods. Our team is ready to review your unique needs to assess which program will provide the highest inventory utilization to maximize cost savings.



Programs Available:

- Proof / Acceptance Testing of New Goods
- In / Out Testing
- Customized Inventory Exchange Programs
- Work Uniquely in Alliance Programs



Member



Post-Testing Process



Certification & Stamping

- Items are stamped certified with the name of company certifying the goods, testing voltage and date stamp (Hi-Line can provide “Date of Test” or “Expiration Date” based on customer parameters)
- Rejected items are clearly stamped as “Visual Test Failure” or “Electric Test Failure”
- All Electrical Test Failures are rendered useless prior to being shipped back to customer, if return is requested



Protecting



- Items that have passed testing are packaged in sealed poly bags
- Plastic containers are recommended for shipping and storing purposes
- Failures can be used for training purposes, further review, monitoring, and tracking

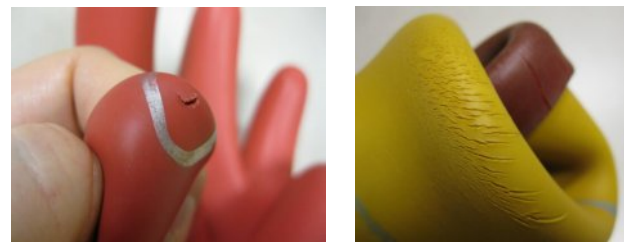
Companies Should Protect Their Rubber Goods with Daily Visual Inspections

Your First Line of Defense In Preventing An Accident.

Daily visual inspections are required by ASTM F1236-96, which outlines 24 types of irregularities to look for during inspections. Making regular visual inspections is crucial for safety and use of damaged goods puts the user in harm’s way. Some damage is not easily visible, requiring inflation or rolling to expose damage such as dry rot, pin-sized holes, nicks, cuts, etc.

Request Your FREE Copy of ‘The Ultimate Guide to Inspecting Rubber Goods’, which provides visual examples to better identify all 24 of the ASTM F1236-96 irregularities to be on the lookout for during daily visual inspections:

content.wesco.com/ultimate-guide-to-inspecting-rubber-goods



Exchange Programs

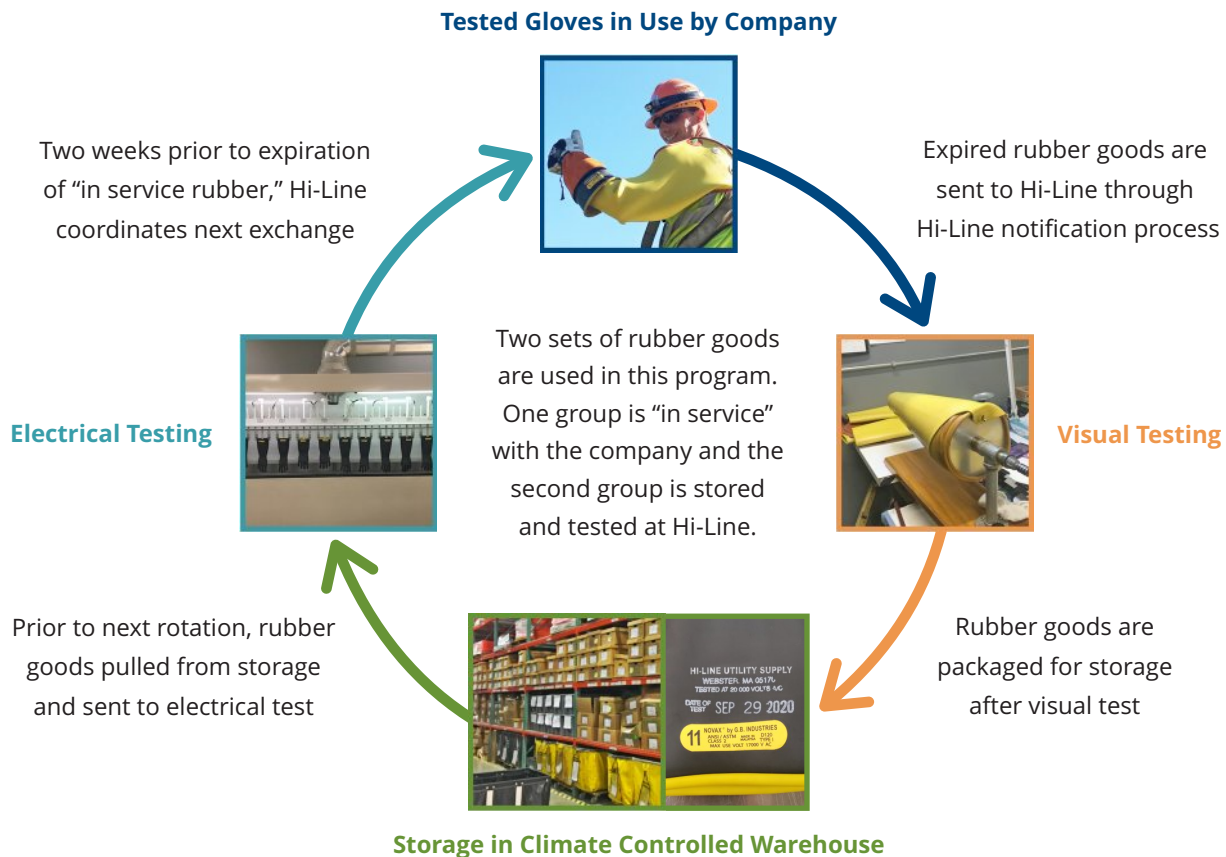


Let Hi-Line do the work for you. Our managed safety service ensures that your rubber goods are routinely cleaned, tested, custom date-stamped and ready to ship from our climate-controlled dielectric lab testing facility when you need them. This program allows you to maximize the usage of your rubber products, saves you time, as well as minimizing the inventory in your warehouse.

Exchange Program Features

- **Customization:** Exchange programs are tailored to each organization's unique needs accommodating varying volumes, cycles, or logistics.
- **Automatic, Hassle-Free Exchanges:** Arrive on-site and OSHA/ASTM compliant for scheduled exchange dates.
- **Climate-Controlled Dielectric Lab Testing Facility:** New and customer owned inventory is housed in recommended conditions for rubber.
- **Spares and Broken Pairs:** Incomplete sets are stored for use as replacements, reducing new purchases, eliminating waste, and minimizing turnaround time.
- **Expert Customer Service** provides support, communication, and order updates every step of the way.
- **Emergency Inventory Support:** Certified dielectric equipment can arrive on-site in as little as 24 hours — anywhere in the U.S.

Exchange Program Inventory Cycle



D201022