

*Your One Source
for Data Center
Infrastructure*

***Reduce Costs,
Improve Performance
and Minimize Risks***
in Your Data Center with:

- WESCO's best-in-class supply chain solutions
- The latest technology from industry-leading manufacturers
- Scalable, flexible solutions for power, space and cooling

Your Data Center Supply Chain Partner

WESCO is a full-service, global supply chain company providing you with leading products, services and solutions to meet your MRO, OEM and capital project requirements. As Your One Source for Data Center Infrastructure, we get what you need.



Many of the World's Leading Data Centers Use WESCO as Their One Source

The breadth and depth of our capabilities, geographic footprint and supply base enable us to meet your needs and provide continuity to your operations.

Whether you're building a new data center, retrofitting your existing infrastructure, migrating to new technologies, or simply maintaining your facility, WESCO provides a solution tailored to your requirements. Through our industry-leading manufacturers and valuable network of contractors and integrators, we can help you minimize risk, reduce costs and improve the performance of your data center. This is why some of the most prominent data center facilities, Web 2.0 businesses, Fortune 500 companies and Cloud-Computing providers choose WESCO.

The Life Cycle of a Data Center

Planning & Design

Plan

Design

Procure

Install



Supporting the Life Cycle of Your Data Center

WESCO supports the life cycle of your data center, from planning through design/build and turn-up, to maintenance and future migrations. With our vast network of industry-leading manufacturers, qualified contractors, construction logistics, and supply chain expertise, we help you build and maintain state-of-the-art data centers.

- Portfolio of solutions supporting the data center from design to operation
- Technology training and specification support from our dedicated team of data center experts
- Power, cooling, cabling and connectivity assessments
- Inventory management and integrated supply
- Complete spare parts inventory and upgrades to the data facility
- MRO and safety products for day-to-day facility needs and maintenance

Construction & Operations



WESCO Data Center Assessments

Our team will provide a comprehensive evaluation regarding space, power, cooling, cabling and connectivity. The complete assessment includes recommendations based on best practices to support your current operations and future demand.

- Technology review to assess your IT use and business goals
- Review and assessment of facility infrastructure elements
- Site survey to inspect the facility and confirm existing infrastructure systems
- Analysis of documentation and site survey data to generate recommendations
- Site modification recommendations and alternative solutions

■ Power

- Power Supplies
- UPS Systems
- Surge Suppressors
- Power Cords
- Power Conditioning
- Grounding & Bonding
- PDUs & Rackmount PDUs
- Remote Power Panels (RPPs)
- Monitoring & Management Systems

■ Cooling

- Chilled Water Systems
- Refrigerant Systems
- Hot/Cold Aisle Containment
- Fan Units
- Perforated Raised Floor Tiles
- Cooling Accessories

■ Racks, Cabinets & Zone Cabling

- Server Cabinets
- Wall Mount Racks & Cabinets
- 2- & 4-Post Racks
- Horizontal & Vertical Cable Managers
- Switch Cabinets
- In-Ceiling Zone Cabling Systems
- In-Floor Zone Cabling Systems
- Cable Ties

■ Cabling & Connectivity

- Pre-Terminated Copper Cabling Systems
- Pre-Terminated Fiber Cabling Systems
- Patch Cords & Cable Assemblies
- Active Optical Cables & Transceivers
- Patch Panels
- Modular Jacks, Inserts & Wall Plates
- Connectors
- Attenuators
- Enclosures

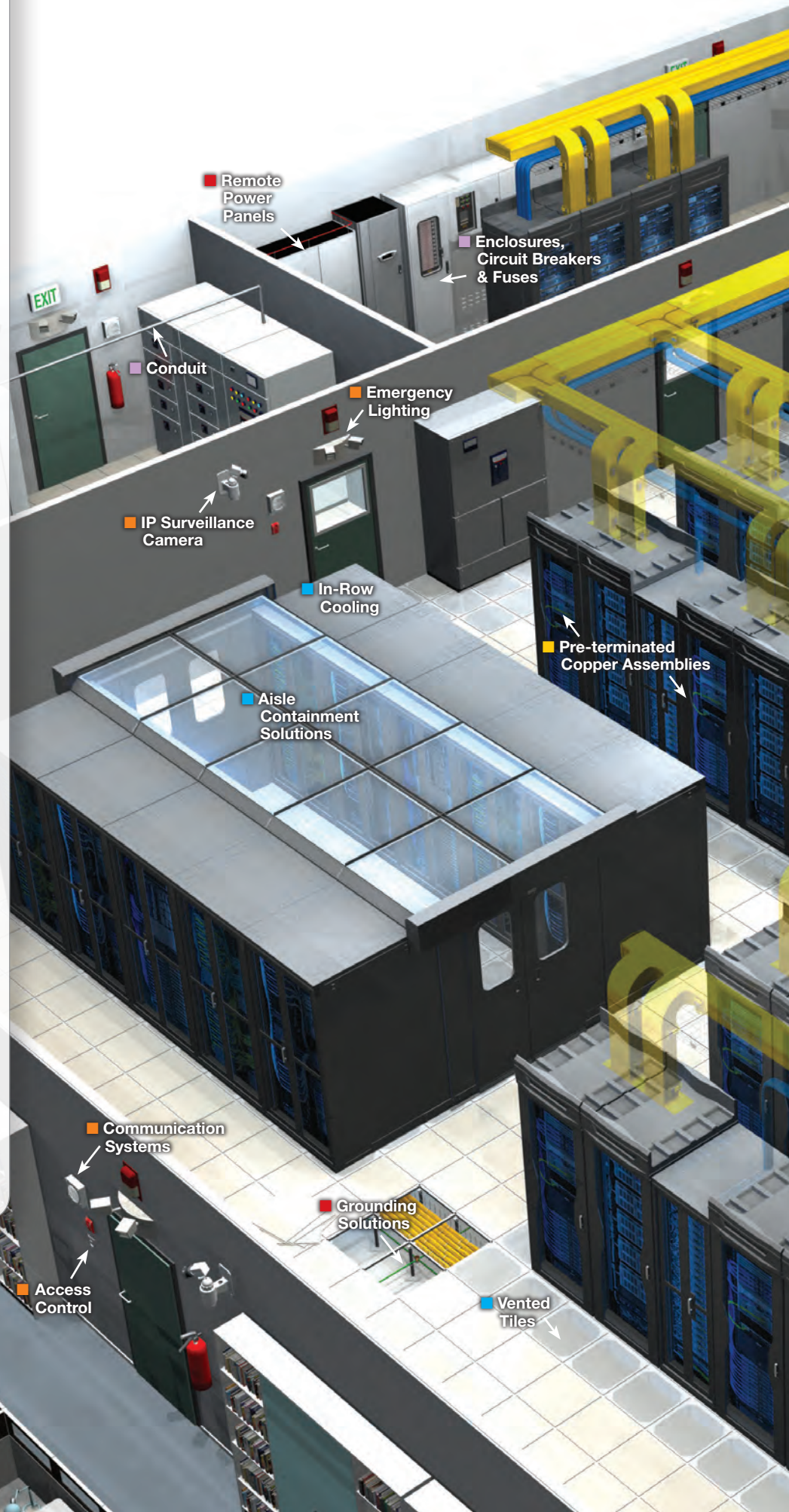
■ Security

- IP Cameras
- Access Control Systems
- Video Management Software
- Low Voltage Cabling
- Communication Systems
- Horns, Speakers & Strobes

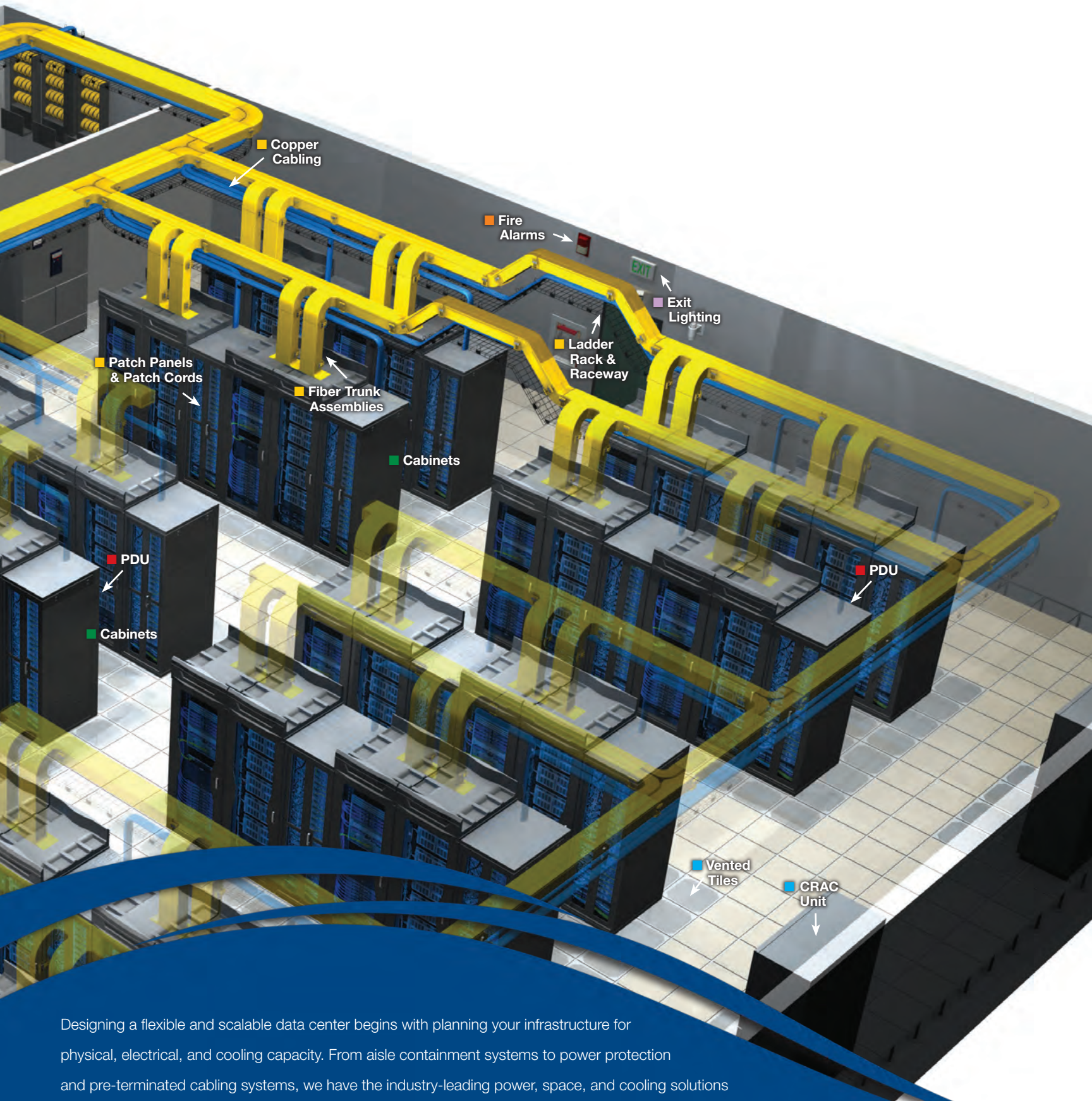
■ Lighting & Electrical

- Boxes & Enclosures
- Circuit Breakers
- Conduit & Raceway
- Electrical Distribution Equipment
- Fuses & Buss Plugs
- Lamps, Ballasts & Fixtures
- Emergency & Exit Lighting
- IP Lighting

And much, much more



Solutions to Meet the Critical Needs of Your Data Center



Designing a flexible and scalable data center begins with planning your infrastructure for physical, electrical, and cooling capacity. From aisle containment systems to power protection and pre-terminated cabling systems, we have the industry-leading power, space, and cooling solutions to optimize your data center.

Maximize Space and Reduce Energy Consumption

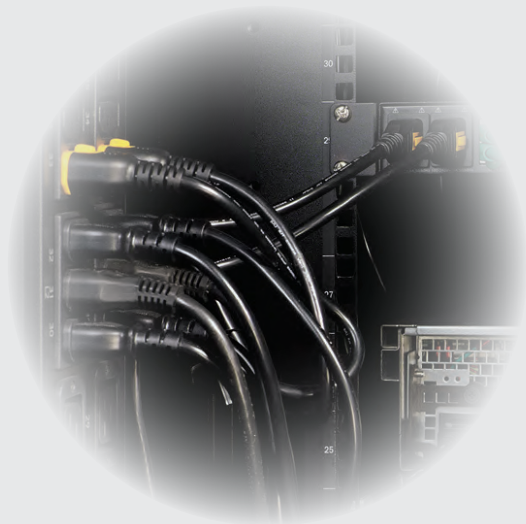


The data center is strategic to your organization's success today and tomorrow. With applications changing faster than ever, a plan for flexibility and optimization is critical, because ad hoc designs can lead to environmental challenges that ultimately limit your growth. Together with our industry-leading suppliers and trusted integrators, WESCO can help you design a flexible data center.



Space

Maximize your data center space with energy-efficient cabinets, and optimize the thermal environment with the latest passive and active cooling technology. With industry-leading solutions, your data center can reach new levels in density without creating unmanageable hot spots.



Power

WESCO has everything you need to distribute safe, secure and high-quality power to your data center. We can assist your facility in reaching your PUE target, beginning with a Data Center Assessment. We will help you identify cooling, lighting, cabling and connectivity solutions that will improve efficiencies and reduce energy use.



Cooling

Efficient cooling systems improve the uptime performance of your active electronics and directly impact energy consumption. For every 1°F increase in room temperature, you realize a 1–2% energy savings. WESCO offers a complete complement of passive and active cooling solutions to optimize your cooling capacity and efficiently scale to meet future demand.



Justifying the Investment in DCIM

Data center infrastructure management (DCIM) systems offer significant benefits in terms of increased uptime and reduced CapEx and OpEx costs. Studies show, however, that the cost of implementing DCIM is the primary barrier to adoption. If you're considering DCIM but aren't sure how to justify the expense, WESCO's team of data center experts can help you determine if a DCIM system will support your corporate objectives by analyzing the costs and benefits, looking at the total cost of ownership (TCO), and building an ROI model.

Prepare for the Future and Protect against Security Risks



Cabling and Connectivity

Cabling and connectivity systems are core to your data center's operation and migration to future technology and higher bandwidth applications. Not only will the right solution make changes easier, but it can also decrease initial installation time, allowing your data center to turn-up faster with greater reliability. Whether you're adding on and matching existing infrastructure, or introducing intelligent infrastructure management, we can match your needs to the ideal solution.



Security



Our security and data center expertise combine to provide world-class physical security and monitoring systems to keep tabs on your physical environment and network infrastructure. Whether your unwanted guest is a trespasser or excessive moisture, WESCO has the IP surveillance systems, access control and monitoring solutions you need to protect your employees, equipment and facility.



Lighting



Data center operators are pressured to improve power usage effectiveness (PUE) and deliver higher uptimes. Improving lighting efficiency is an easy way to make an immediate impact. With an Intelligent Lighting Network Solution, you can reduce lighting energy consumption by up to 75%, and distribute a high-density sensor network across your mission-critical facility.

- Save up to 75% on lighting energy costs
- Improve PUE and gain LEED® points
- Monitor environmental threats to uptime
- Reduce maintenance and enhance security
- Use low-voltage cable to power and control lights for a flexible, lower-cost installation
- Recommended in ANSI/TIA 942A



Virtualization Strategies and Infrastructure

Virtualization increases server utilization, reducing capital expenses, but often challenges the physical environment. Successful virtualization strategies require an infrastructure plan to mitigate increased heat loads, improve cooling efficiency and reduce space requirements, all while minimizing operating expenses.

The right strategy for your infrastructure can help keep these costs in check and improve your bottom line. WESCO's team of data center experts can support your virtualization strategy with infrastructure solutions and planning services that help you maximize the return on your virtualization investment.

Create a Scalable, Flexible and Reliable Data Center with WESCO



Value Creation Solutions

WESCO provides a global platform for integrating industry-leading data communications, lighting, electrical and supply chain solutions. Through our Value Creation Process, we identify technology, procurement, reporting and compliance improvements to drive cost reductions, minimize risk, improve operating efficiencies and maximize capacity in your data center.

- Data Center Assessment
- Cut-to-Length Cabling Services
- Feed-the-Job Delivery
- Project Staging
- Kitting and Labeling
- eBusiness Solutions
- Technology Training and Education
- Custom and Consolidated Reporting
- Job Trailers
- Recycling Services
- Rack and Stack
- Storeroom Management
- Vendor Managed Inventory
- Safety Assessments
- Integrated Supply



Let's Get Started

Our Sales Engineers are ready to discuss your requirements and develop a custom solution for your data center infrastructure and supply chain.

Contact us today.

www.wesco.com/branchlocator





WESCO®

WESCO Distribution, Inc.

225 West Station Square Drive, Suite 700

Pittsburgh, PA 15219

Phone: 412.454.2200

www.wesco.com

WESCO International, Inc. (NYSE: WCO), a publicly traded Fortune 500 holding company headquartered in Pittsburgh, Pennsylvania, is a leading provider of data communications, security, electrical, industrial, maintenance, repair and operating (MRO) and original equipment manufacturers (OEM) product, construction materials, and advanced supply chain management and logistic services. 2014 annual sales were approximately \$7.9 billion. The company employs approximately 9,400 people, maintains relationships with over 25,000 suppliers, and serves over 75,000 active customers worldwide. Customers include commercial and industrial businesses, contractors, government agencies, institutions, telecommunications providers, and utilities. WESCO operates nine fully automated Distribution Centers and approximately 485 full-service Branches in North America and international markets, providing a local presence for customers and a global network to serve multi-location businesses and multi-national corporations.