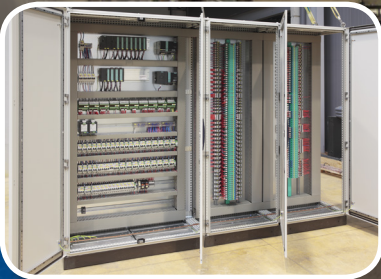
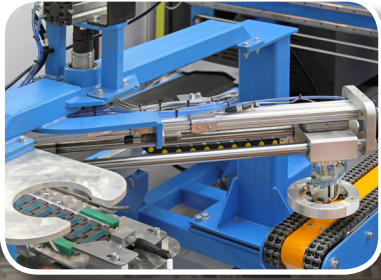


WESCO AUTOMATION SOLUTIONS



Industry-Leading Automation Solutions to Improve Your Business

WESCO develops factory automation applications and systems to address the unique needs of your business. We can help you design and install automation solutions using the right combination of components from world-class automation manufacturers.

Once the installation is complete, our technical services and support will continue for the entire product life cycle. We offer automation expertise for specific application problems, product demos, and training to assist you at every stage, from concept through purchase, installation, and operation.



WESCO®

Best-In-Class Supplier Partners and Products

Our strong supplier partnerships allow us to design and install state-of-the-art automation solutions using the right combination of components from industry-leading manufacturers.

Our supplier partners include:



WESCO's Automation product offering includes:

Controllers & I/O

Distributed I/O
Large platform controllers
Small controllers

Motion Control

Servo drives
Servo cables
Servo mechanics
Servo motors & actuators

Enclosures

Engineered enclosures
IT racks, cabinets and enclosures
Stainless steel enclosures
Standard enclosures
Enclosure accessories
Thermal management products

Factory Automation Systems & Robotics

Process controls
Programmable logic controllers (PLCs)
Automation software
Visualization and HMI
Electronic Operator Interface
Industrial PCs
Input/output (I/O) modules
Industrial robotics

Drives & Motors

AC/DC drives
Drive cables
Drive systems
Motors
Variable Frequency Drives (VFDs)
VFD cables

Industrial Controls

Circuit protection
Contactors
Electrical distribution equipment
Power conditioning
Power supplies
Pushbuttons
Relays
Surge suppressors
Switches
Terminal blocks
Timers
UPS systems

Sensors & Safety

Machine and process safety solutions
Machine safety components
Machine safety control systems
Sensors and switches

Industrial Networks & Connectivity

Cable and connectivity
Cable routing
Connection devices
Ethernet switches
Industrial infrastructure products
Industrial network cable
Industrial network software
Industrial network tools and testing equipment
Network equipment
Panel wiring
Patch cords
Wireless products and systems

Motion Control Centers

Engineered solutions
Motor control centers

To learn about exclusive automation offerings in your area, please contact your local WESCO team via our branch locator tool:
<https://branchlocator.wesco.com/>

Product authorization may vary at each location. Contact your local branch for availability.

HEADQUARTERS
WESCO Distribution, Inc.
225 W. Station Square Drive, Suite 700
Pittsburgh, Pennsylvania 15219
412-454-2200

www.wesco.com
buy.wesco.com

WESCO International, Inc. (NYSE: WCC), a publicly traded Fortune 500 holding company headquartered in Pittsburgh, Pennsylvania, is a leading provider of electrical, industrial, and communications maintenance, repair and operating (MRO) and original equipment manufacturers (OEM) products, construction materials, and advanced supply chain management and logistic services. 2017 annual sales were approximately \$7.7 billion. The company employs approximately 9,000 people, maintains relationships with over 26,000 suppliers, and serves approximately 75,000 active customers worldwide. Customers include commercial and industrial businesses, contractors, government agencies, institutions, telecommunications providers, and utilities. WESCO operates ten fully automated distribution centers and approximately 500 full-service branches in North America and international markets, providing a local presence for customers and a global network to serve multi-location businesses and multi-national corporations.

