



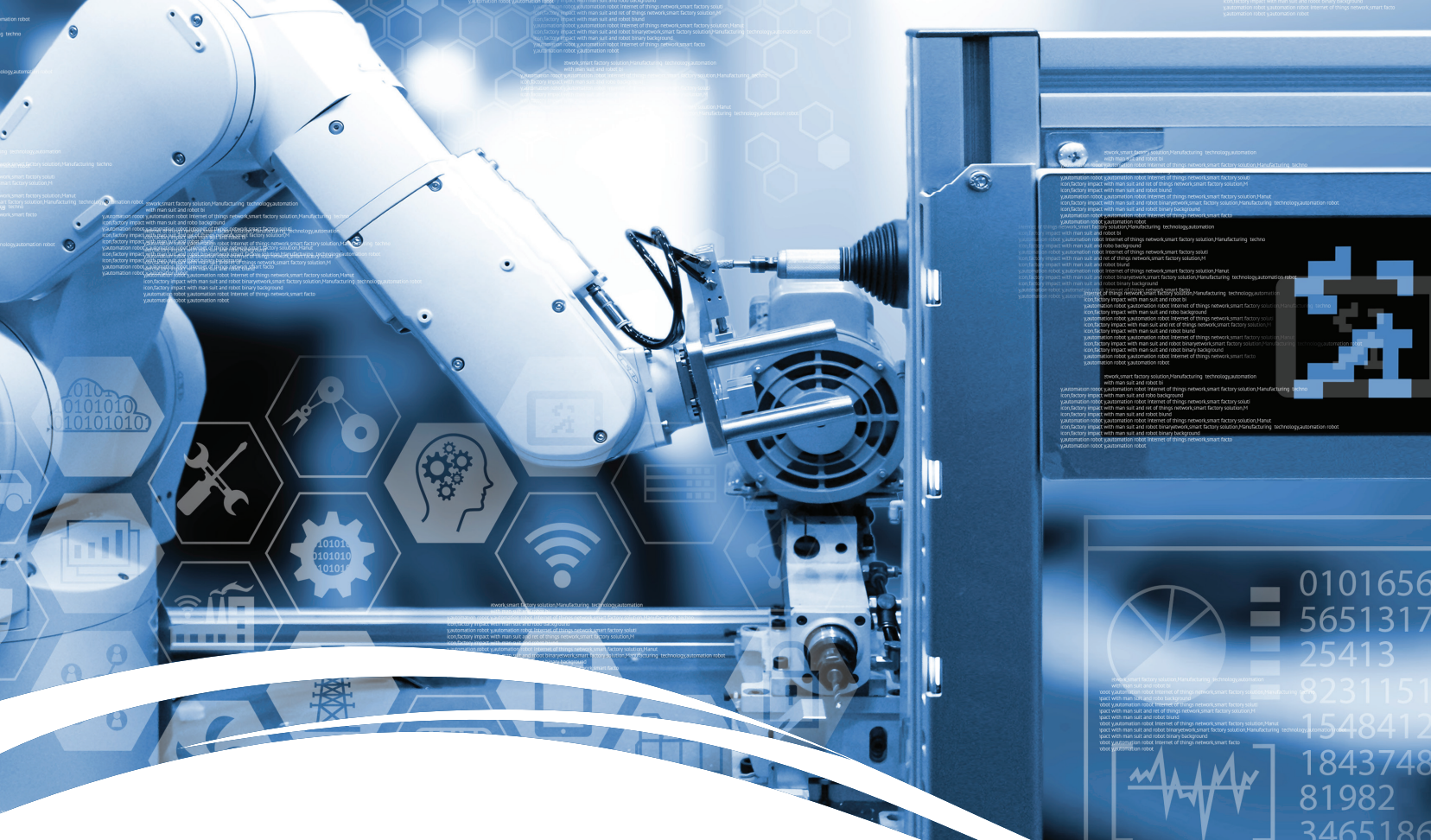
Your One Source for
Industrial Automation
Solutions



Industry-Leading Automation Solutions

to Improve Your Business:

- State-of-the-art automation products and support from world-class suppliers
- Local automation specialists to provide technical assistance from concept to operation
- WESCO's best-in-class supply chain solutions
- System integrator ecosystem to provide complete turnkey solutions



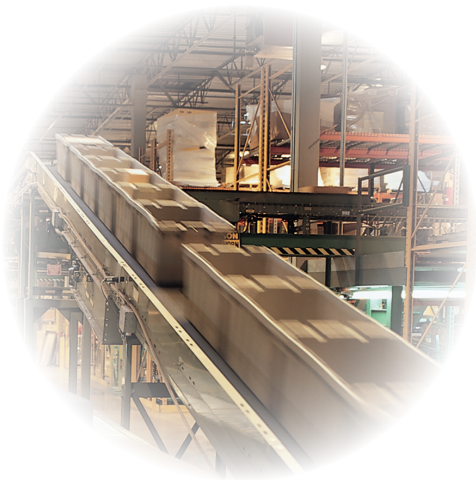
Your Automation Supply Chain Partner

WESCO is a full-service, global supply chain company, providing you with leading products, services, and solutions to meet your MRO, OEM, and capital project requirements. As your One Source for Industrial Automation Solutions, we get what you need.

WESCO Delivers Automation Solutions and Capabilities

WESCO develops factory automation applications and systems to address the unique needs of your business. We can help you design and install automation solutions using the right combination of components from well-known automation manufacturers.

Once the installation is complete, our technical services and support will continue for the entire product life cycle. We offer automation expertise for specific application problems, product demos, and training to assist you at every stage, from concept through purchase, installation, and operation.



A Complete Automation Solution

WESCO provides everything you need for industrial automation, process control, and motor control applications. Look to WESCO to fill your complete bill of materials for a project or for plant maintenance and operations.

WESCO will work closely with you to plan, design, and implement new programs that provide flexible solutions to meet your complex demands. Our solid relationships with world-class automation manufacturers enable us to offer you the breadth and depth of product to satisfy your needs, including preferred national relationships with key manufacturers. The full range of product offering includes factory automation, drives and motors, and industrial control products.



Industries Served

- Automotive
- Fibers and textiles
- Food and beverage
- Healthcare/institutional
- Infrastructure
- Machine builders and OEMs
- Marine
- Mining, metals, and minerals
- Oil and gas/petrochemical
- Power generation
- Print and publishing
- Pulp and paper
- Semiconductor and electronics
- Tire and rubber
- Water and wastewater



■ FACTORY AUTOMATION

- Electronic Operator Interface
- Industrial PCs
- Input/output (I/O) modules
- Process control
- Programmable logic controllers (PLCs)
- Software
- Visualization and HMI

■ CONTROLLERS & I/O

- Distributed I/O
- Large platform controllers
- Small controllers

■ DRIVES & MOTORS

- AC/DC Drive
- Component LV and MV solutions
- Drive cables
- Drive systems
- Motors
- Variable Frequency Drives (VFDs)
- VFD cables

■ ENCLOSURES

- Engineered enclosures
- IT racks, cabinets and enclosures
- Stainless steel enclosures
- Standard enclosures
- Thermal management products

■ INDUSTRIAL CONTROL

- Circuit protection
- Electrical Distribution equipment
- Power conditioning
- Power supplies
- Pushbuttons
- Relays
- Surge suppressors
- Switches
- Terminal blocks
- Timers
- UPS systems

■ INDUSTRIAL NETWORKS & CONNECTIVITY

- Cable and connectivity
- Cable routing
- Connection devices
- Ethernet switches
- Industrial infrastructure products
- Industrial network cable
- Industrial network software
- Industrial network tools and testing equipment
- Network equipment
- Panel wiring
- Patch cords
- Wireless products and systems

■ MOTION CONTROL

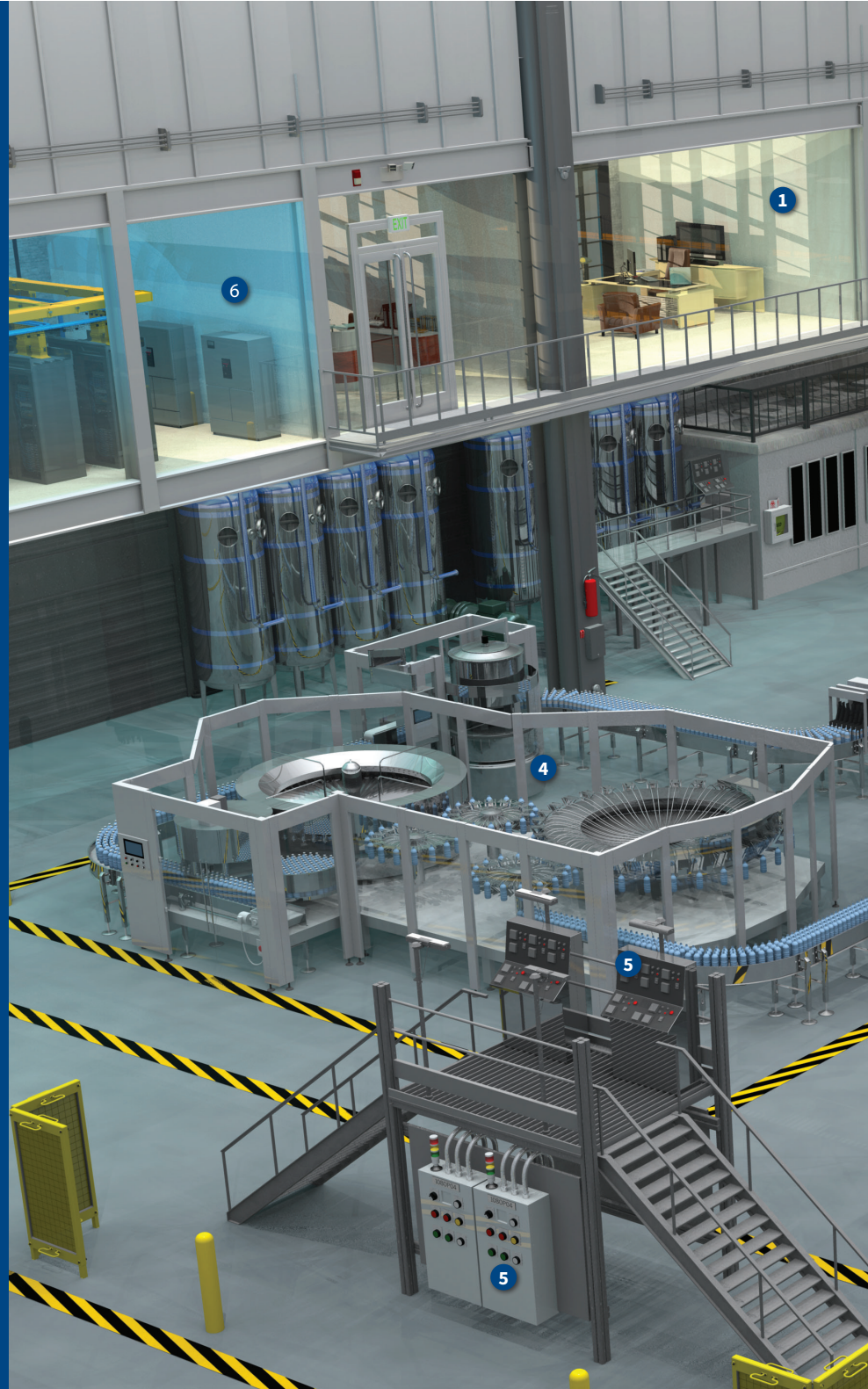
- Servo drives
- Servo cables
- Servo mechanics
- Servo motors & actuators

■ MOTOR CONTROL CENTERS

- Engineered solutions
- LV and MV motor control centers
- Motor control centers

■ SENSOR & SAFETY

- Machine safety and process safety solutions
- Machine safety components
- Machine safety control systems
- Sensors and switches



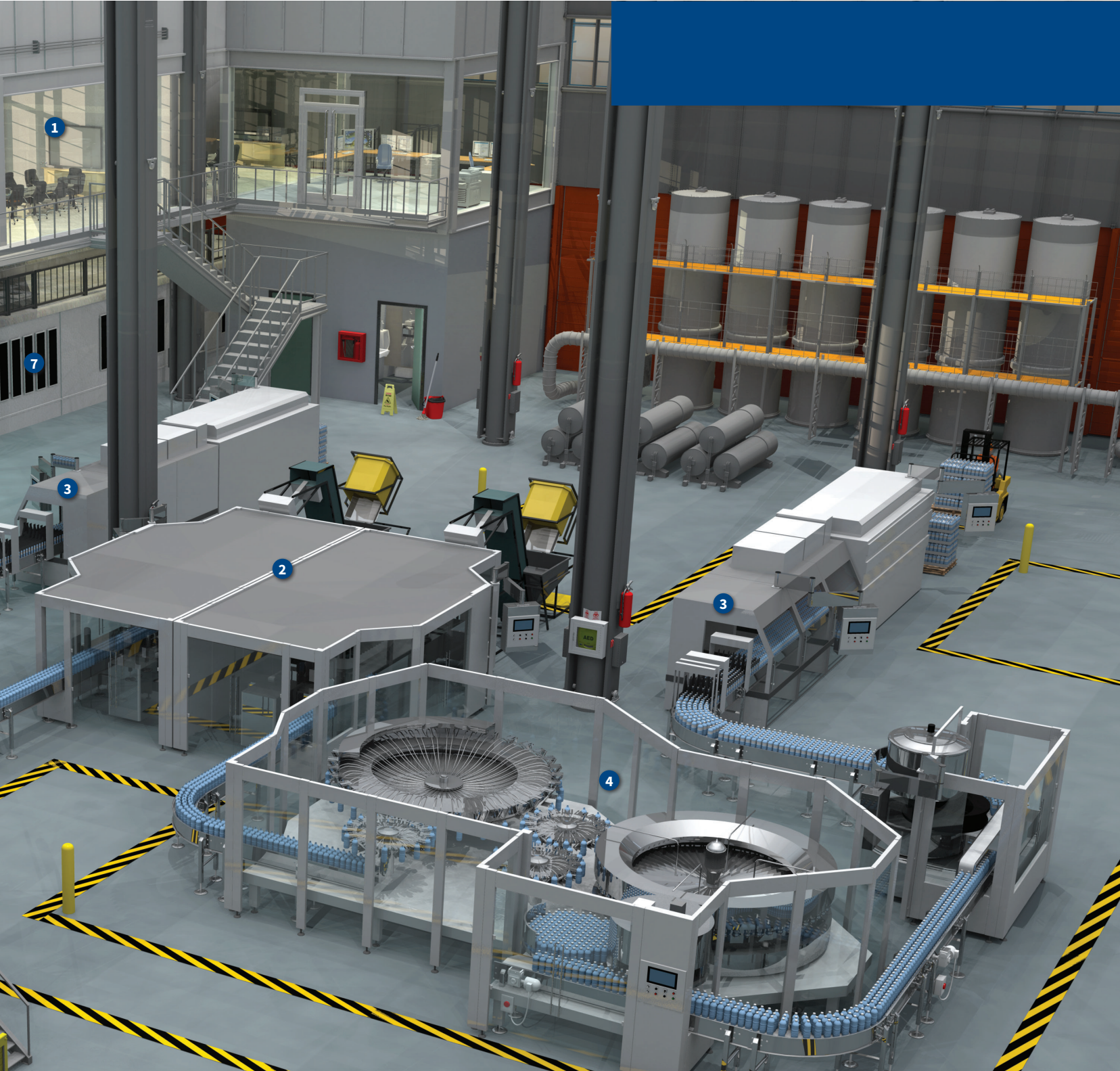
Industrial Automation and Control

1 OFFICES AND MEETING ROOMS

- Factory Automation
- Industrial Networks

2 BLOW MOLDING STATION

- Factory Automation
- Controllers & I/O
- Drives & Motors
- Enclosures
- Industrial Control
- Industrial Networks
- Motion Control
- Sensor & Safety



Control Solutions

As a full-service global supply chain company, WESCO offers all the products you need to keep your facility running smoothly to maximize productivity and uptime.

3 SHRINK WRAPPING STATION

- Factory Automation
- Controllers & I/O
- Drives & Motors
- Enclosures
- Industrial Control
- Industrial Networks
- Motion Control
- Sensor & Safety

4 FILLING STATION

- Factory Automation
- Controllers & I/O
- Drives & Motors
- Enclosures
- Industrial Control
- Industrial Networks
- Motion Control
- Sensor & Safety

5 PANEL BOARDS/CONTROLS

- Factory Automation
- Controllers & I/O
- Drives & Motors
- Enclosures
- Industrial Control
- Industrial Networks

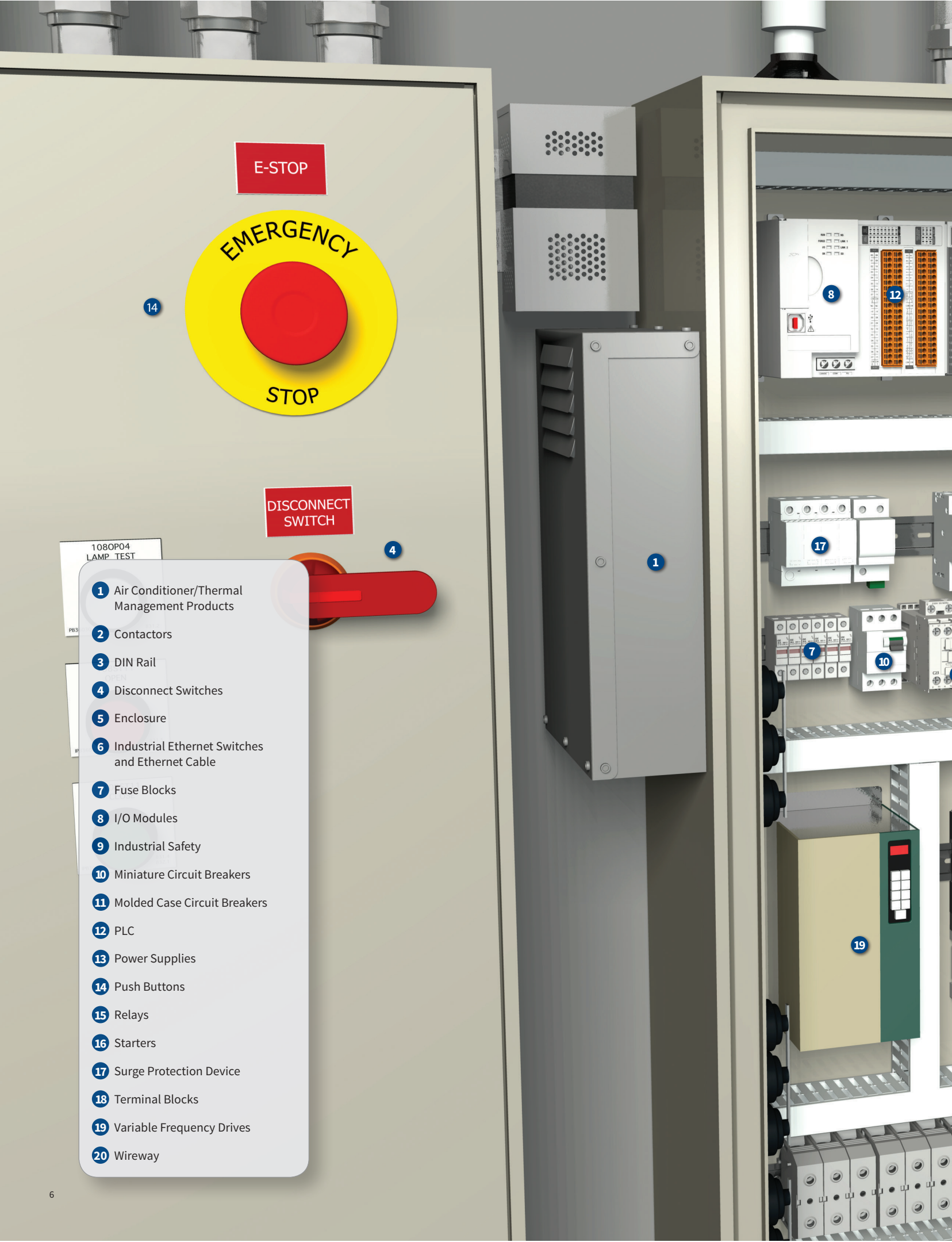
6 DATA CENTER

- Enclosures
- Industrial Networks

7 MOTOR CONTROL CENTERS



WESCO®



E-STOP

EMERGENCY

STOP

DISCONNECT
SWITCH

108OP04
LAMP TEST

- 1 Air Conditioner/Thermal Management Products
- 2 Contactors
- 3 DIN Rail
- 4 Disconnect Switches
- 5 Enclosure
- 6 Industrial Ethernet Switches and Ethernet Cable
- 7 Fuse Blocks
- 8 I/O Modules
- 9 Industrial Safety
- 10 Miniature Circuit Breakers
- 11 Molded Case Circuit Breakers
- 12 PLC
- 13 Power Supplies
- 14 Push Buttons
- 15 Relays
- 16 Starters
- 17 Surge Protection Device
- 18 Terminal Blocks
- 19 Variable Frequency Drives
- 20 Wireway



Put WESCO and Our

WESCO's Integrator Ecosystem encompasses a team of industry-recognized systems integrators, manufacturer solution partners, and panel shops. Our integrators go through an approval process that allows us to ensure we have a trusted and reliable solution partner with the correct specialized and unique capabilities that offer a complete solution to reach your industrial automation and control objectives. Whether you wish to reduce downtime, increase throughput, tighten process control, or reduce waste, our specialists will provide you with a wide variety of services to keep your project on track and ensure a cost-effective solution.

When you engage WESCO early in the design process for capital projects, such as new or expanded production lines, plant expansions, or new plants, we can deliver value and cost savings of 18–22%. This includes new additions to existing systems, or modernizing older or obsolete systems. WESCO has a proven track record of delivering savings for large capital projects in the areas of integration and controls, lighting, and electrical distribution.

Control System

WESCO's extensive control and integration expertise allows us to provide customized, in-depth solutions. We work with your team to determine your requirements and align the strongest solutions drawn from our world-class services and preferred integrator partners. We then deliver an economical, safe, and reliable system to improve your bottom line and keep your business operational and efficient.

Assembled Solutions

WESCO can help you design and build automation solutions using the right combination of components from well-known automation manufacturers. With more than 300 dedicated employees with engineering and manufacturing expertise across five locations in the U.S. and Mexico, our dedicated electrical, mechanical and industrial engineering departments support your assembly needs.

Capabilities

- Cable/Sensor assemblies
- Wire Harness assemblies
- Small/medium/large enclosure builds
- Mechanical assemblies/motion control
- Product kitting
- In-house Solidworks and CAD capabilities
- State-of-the-art automated wire processing equipment
- Fiber optic cable assembly equipment
- Computer server configuration and testing

Credentials

- ISO 9001:2000 certified
- UR certified
- UL 508 registration
- ATEX
- CE

Partners to Work for You

Automation Services

WESCO works directly with you to design and develop factory automation applications and systems. We offer automation expertise for specific application problems, product demos, and training. Our Tech Centers and Automation Specialists, located throughout the country, provide expert technical assistance from preliminary design to operation. You can rely on WESCO for a wide product offering, local availability, and unbiased product advice.

Assessment Services

Baseline evaluations of plant floor technical skills, procedures, equipment operation, reliability and uptime monitoring/analysis, spare parts inventory, risk, safety and security, and other automation-related assessments

Asset Management Services

Maintenance and repair operations (MRO) process and spare parts management for automation assets

On-Site Support Services

Startup and commissioning, troubleshooting, conversions, and preventive maintenance for automation equipment and systems

Repair Services

On-site assessment to evaluate equipment repair or replacement options and determine the feasibility of an ongoing maintenance program that can help reduce downtime, increase plant efficiency, and optimize spare parts inventory levels

Safety, Network, and Security Services

Network design and evaluation, security policy development/deployment, and machine safety services

Technical Support

Application specialists able to provide expert technical assistance from product configuration to application support

Training Services

Training available to provide your workforce with the necessary skills and knowledge on automation and related topics

Phone Support

Technical telephone and online chat support available on automation products through a dedicated staff of specialists



A Global Supply Chain Solutions Provider

WESCO is a full-service global supply chain company that provides customers with the leading products and services they need to meet their capital project, manufacturing, and maintenance, repair, and operations requirements.

WESCO is Your One Source For It All

A Broad Array of Products

- Automation and Controls
- Communications and Security
- Electrical Distribution and Controls
- Electronics and Direct Materials
- Lighting and Sustainability
- MRO and General Supplies
- Wire, Cable, and Conduit

Value Creation Solutions

Our WESCO Value Creation program offers dozens of solutions to help you increase efficiency and safety, and reduce supply chain costs and energy consumption. Ask your WESCO Sales Representative to tell you more.

Companies face many challenges in today's competitive business environment, including cost reduction and improving productivity, service, quality, and safety. The WESCO Value Creation Process can help you overcome these challenges.

Using the WESCO Value Creation Process, we can identify your business requirements and align our services to implement a solution customized to your needs. With access to over 50 Value Creation Solutions, your WESCO Representative and implementation team will help you reduce operational costs, minimize risk, improve efficiencies, enhance safety, and slash waste.

Gain significant advantages. Enjoy measurable cost savings. Upgrade your business to a new level of competitiveness with the WESCO Value Creation Process.





Let's Get Started

Our automation specialists are ready to discuss your requirements and work with you to develop a custom solution to meet your industrial automation and control needs. Contact us today.

To find a location near you, use the Branch Locator on www.wesco.com



WESCO®



WESCO®

WESCO Distribution, Inc.

225 West Station Square Drive, Suite 700

Pittsburgh, PA 15219

Phone: 412.454.2200

www.wesco.com

WESCO International, Inc. (NYSE: WCC), a publicly traded Fortune 500 holding company headquartered in Pittsburgh, Pennsylvania, is a leading provider of electrical, industrial, and communications maintenance, repair and operating (MRO) and original equipment manufacturers (OEM) products, construction materials, and advanced supply chain management and logistic services. 2017 annual sales were approximately \$7.7 billion. The company employs approximately 9,000 people, maintains relationships with over 26,000 suppliers, and serves approximately 75,000 active customers worldwide. Customers include commercial and industrial businesses, contractors, government agencies, institutions, telecommunications providers, and utilities. WESCO operates ten fully automated distribution centers and approximately 500 full-service branches in North America and international markets, providing a local presence for customers and a global network to serve multi-location businesses and multi-national corporations.