

**KAC — North American**

**600 Vac (UL), 1 to 1000 A**

North American style bolted tags high speed fuses. These fuses are supplied as replacements only. For new installations, Eaton recommends the 700 V FWP. See page 4-11.

**Ratings**

- Volts 600 Vac
- Amps 1-1000 A
- IR 200 kA RMS Sym.

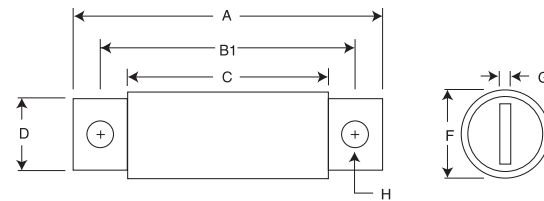
**Agency information**

- UL Recognized, JFHR2, E56413 (1-600 A only)
- CE

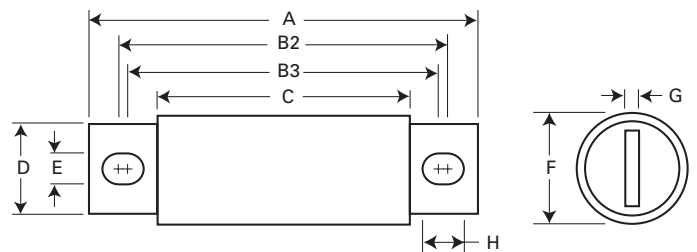


| Rated voltage | Rated current (amps) | Catalog no. |
|---------------|----------------------|-------------|
|               | 1                    | KAC-1       |
|               | 2                    | KAC-2       |
|               | 3                    | KAC-3       |
|               | 4                    | KAC-4       |
|               | 5                    | KAC-5       |
|               | 6                    | KAC-6       |
|               | 7                    | KAC-7       |
|               | 8                    | KAC-8       |
|               | 9                    | KAC-9       |
|               | 10                   | KAC-10      |
|               | 12                   | KAC-12      |
|               | 15                   | KAC-15      |
|               | 17.5                 | KAC-17.5    |
|               | 20                   | KAC-20      |
|               | 25                   | KAC-25      |
|               | 30                   | KAC-30      |
|               | 35                   | KAC-35      |
|               | 40                   | KAC-40      |
|               | 45                   | KAC-45      |
|               | 50                   | KAC-50      |
| 600 Vac (UL)  | 60                   | KAC-60      |
|               | 70                   | KAC-70      |
|               | 80                   | KAC-80      |
|               | 90                   | KAC-90      |
|               | 100                  | KAC-100     |
|               | 110                  | KAC-110     |
|               | 125                  | KAC-125     |
|               | 150                  | KAC-150     |
|               | 175                  | KAC-175     |
|               | 200                  | KAC-200     |
|               | 225                  | KAC-225     |
|               | 250                  | KAC-250     |
|               | 300                  | KAC-300     |
|               | 350                  | KAC-350     |
|               | 400                  | KAC-400     |
|               | 450                  | KAC-450     |
|               | 500                  | KAC-500     |
|               | 600                  | KAC-600     |
|               | 700                  | KAC-700     |
|               | 800                  | KAC-800     |
|               | 1000                 | KAC-1000    |

**Dimensions — in**



**1-30 A and 450-1000 A**



**35-400 A**

| Rated current (amps) | A    | B1   | B2   | B3   | C    | D    | E    | F    | G    | H    |
|----------------------|------|------|------|------|------|------|------|------|------|------|
| 1-30                 | 2.88 | 2.50 | —    | —    | 1.88 | 0.41 | —    | 0.56 | 0.06 | 0.26 |
| 35-60                | 4.38 | —    | 3.75 | 3.50 | 2.75 | 0.63 | 0.34 | 0.81 | 0.09 | 0.47 |
| 70-100               | 5.00 | —    | 4.06 | 3.66 | 2.75 | 0.75 | 0.41 | 1.00 | 0.13 | 0.61 |
| 110-200              | 5.14 | —    | 4.39 | 3.77 | 2.91 | 1.00 | 0.41 | 1.50 | 0.19 | 0.72 |
| 225-400              | 6.18 | —    | 4.82 | 4.57 | 3.00 | 1.63 | 0.56 | 2.00 | 0.25 | 0.69 |
| 450-800              | 6.25 | 4.75 | —    | —    | 3.06 | 2.00 | —    | 2.50 | 0.25 | 0.56 |
| 1000                 | 7.25 | 4.75 | —    | —    | 3.06 | 2.75 | —    | 3.50 | 0.38 | 0.56 |

1" = 25.4mm

High speed fuses